

# SD

RESIDENCE 03  
FLOORS 2-7  
STUDIO  
1 BATHROOM  
473 S.F.  
44 M<sup>2</sup>

## RESIDENCE FEATURES:

- SPACIOUS OPEN LAYOUTS WITH FLOOR TO CEILING WINDOWS
- EXQUISITE OAK FLOORING
- REFINED KOHLER FINISHES AND EXEMPLARY DETAILS
- CUSTOM GOURMET KITCHENS FEATURING CUTTING-EDGE PREMIUM APPLIANCES
- DESIGNER KITCHENS AND BATHS FEATURING QUARTZ STONE COUNTERTOPS
- SPA-LIKE BATHROOMS FEATURING ELEGANT PORCELAIN TILES
- STATE-OF-THE-ART WASHER AND DRYER
- CENTRAL HEATING AND COOLING

## SALES GALLERY

101 HUDSON STREET, SUITE 3602  
JERSEY CITY, NJ 07302  
201.860.9988

99HUDSONLIVING.COM

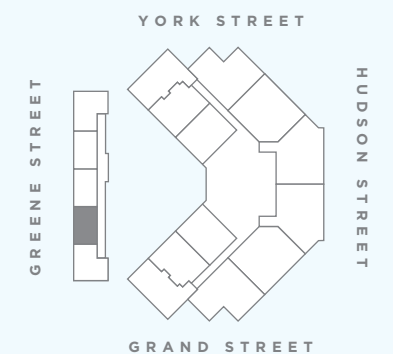
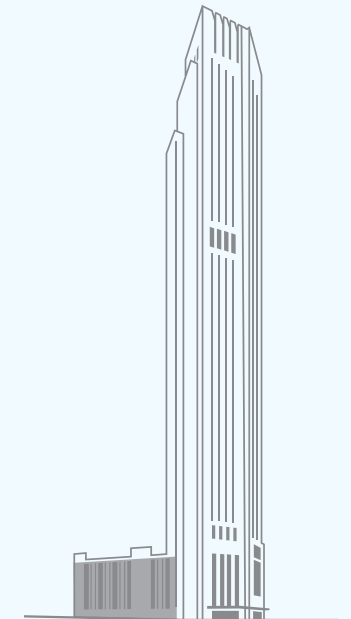
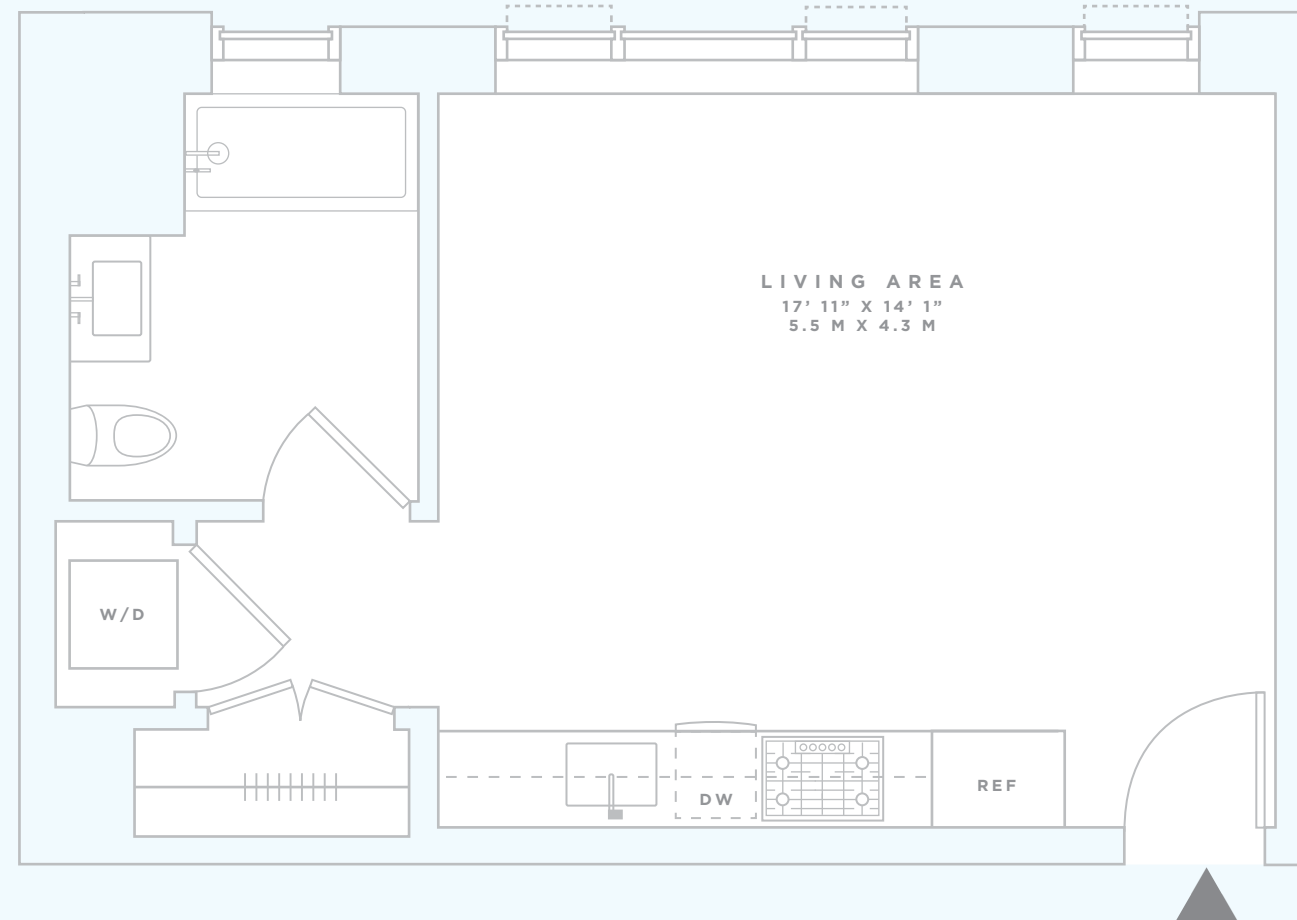
SALES@99HUDSONLIVING.COM

 中國海外美國公司  
CHINA OVERSEAS AMERICA, INC.



Floor plan dimensions are approximate and subject to normal construction variances and tolerances. Square footage exceeds the usable floor area. Sponsor reserves the right to make changes in accordance with the terms of the Public Offering Statement. Plans and dimensions may contain minor variations from floor to floor. The complete offering terms are in the Public Offering Statement available from Sponsor. Sponsor makes no representation or warranties except as may be set forth in the Public Offering Statement and Purchaser acknowledges and agrees that it has relied only on the terms of the Public Offering Statement.

# 99 Hudson



EXCLUSIVE MARKETING & SALES : THE MARKETING DIRECTORS